

# MEA<sup>®</sup> Hygienic Drainage System



 MEA Modular Box Channel

 MEA Drains

 MEA Box Channel

# MEA Group GmbH

SUCCESS IN BUILDING, BUILDING SUCCESS

- Founded in Bavaria, Germany, in 1886
- Over 130 years of experience
- Global supplier of drainage systems
- Production bases in : Germany, France, Czech Republic, China

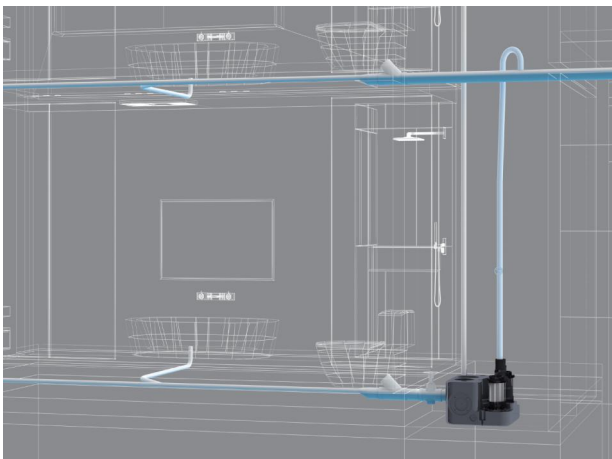
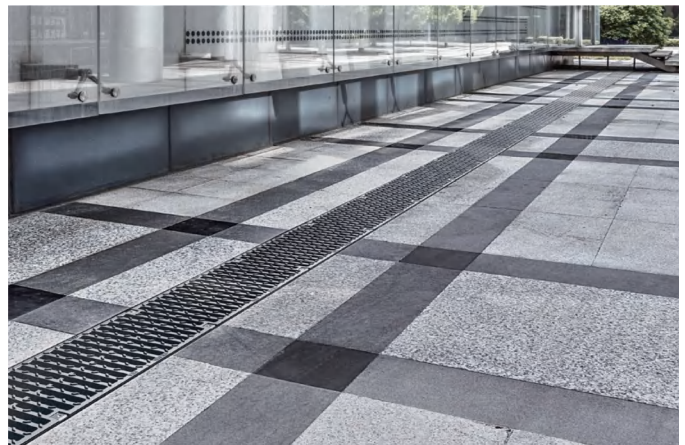




- Adhere to German quality, 15 years experience in Chinese market
- Businesses cover Asia-Pacific, Australia, North America
- Provide the best drainage system solutions and products to customers



- Linear drainage system
- Stainless steel drainage system
- Grease separators
- Sewage lifting system



## MEA Hygienic Drainage System



MEA Hygienic Drainage System, including Modular Drainage System, Drains and Box Channel, provide professional drainage solutions for a variety of applications through standardized and customized products.

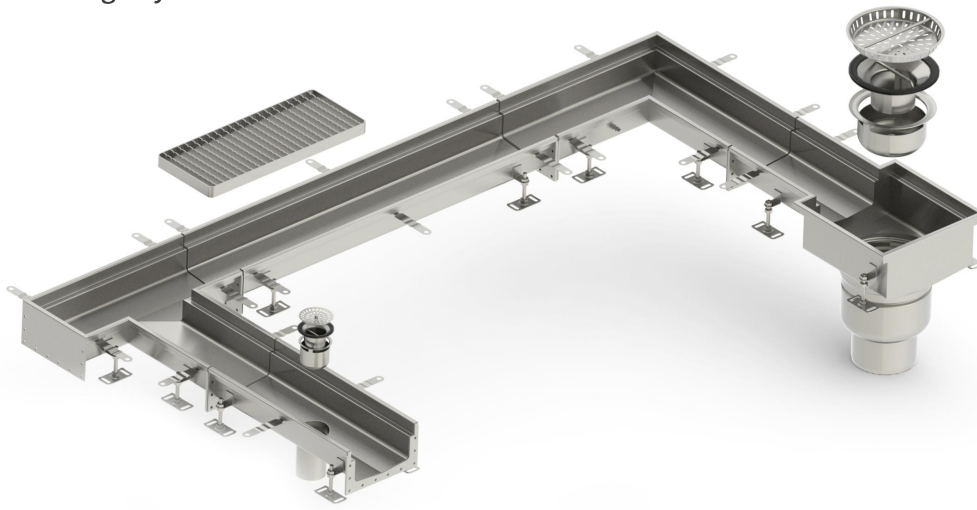
### Design and Technical Features

- > Modular assembly for quick installation
- > Sealed design to avoid drainage leakage
- > Internal radii  $\geq 3\text{mm}$ , bottom radii  $\geq 10\text{mm}$ , increases cleaning effectiveness
- > Edge in-fill, impact resistance, prevent harbouring microorganism
- > Optional passivation, electropolishing, shot blasting surface treatment
- > Hygienic antislip gratings
- > EU CE certification, conform to EN1253, EN16165

### Advantages of Stainless Steel

- > Stainless steel 304 or 316L
- > Highly corrosion resistant and long life
- > Resistant to temperature and thermal shock
- > Smooth surface, easy to clean
- > Coefficient of linear expansion similar to concrete
- > 100% recyclable material

**Modular Drainage System**



**Drains**



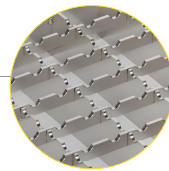
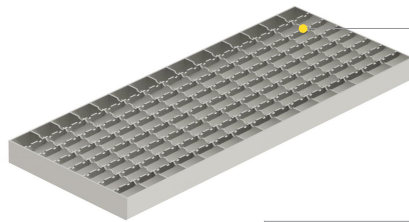
**Box Channel**



## Grating

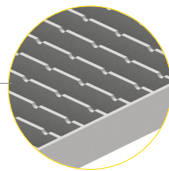
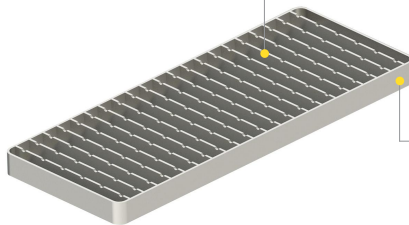
- > Stainless steel 304 or 316L
- > Optional passivation, electropolishing, sandblasting surface treatment
- > Hygienic antislip gratings
- > Multiple styles of gratings, matched according to the application conditions

Mesh grating

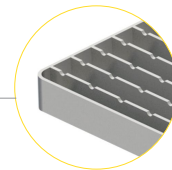


Mesh grating with either slip resistant

Ladder grating

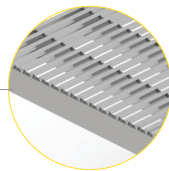


Ladder grating, hygienic and slip resistant



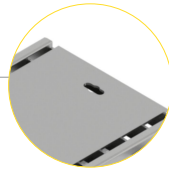
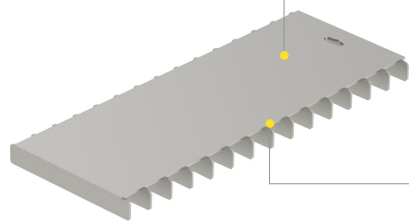
Rounded corners

Wedge mesh grating

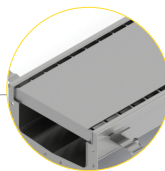


Wedge design, intercept debris with a diameter greater than 6mm

Slot grating

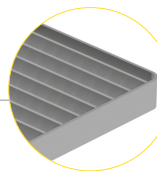


With lifting hole, easy to clean and maintain



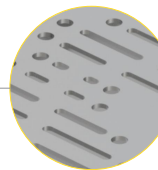
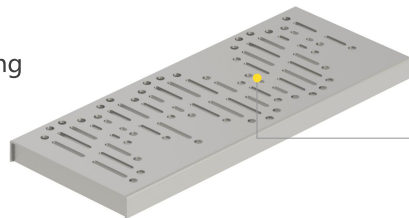
Bilateral slot drainage, slot width 10mm

Hygienic ladder grating



Ladder grating, high flow, hygienic, rounded corners

Customized grating



Customized patterns to suit various requirement

**Load Class**

**INDOOR**

MEA GRATINGS FOR INDOOR USE are tested and classified according to EN 1253 "Gullies for buildings".

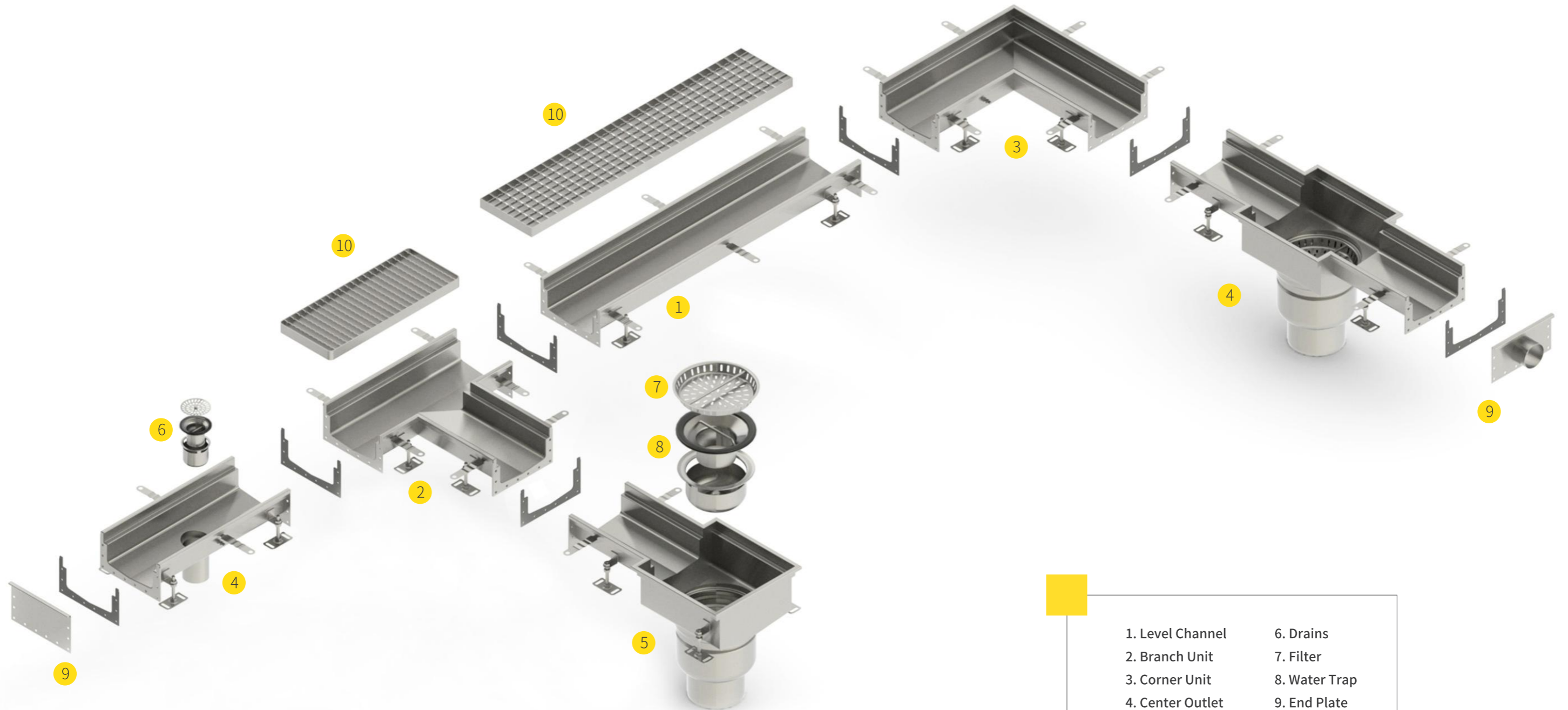
**OUTDOOR**

MEA GRATINGS FOR OUTDOOR USE are tested and classified in accordance with EN 1433 "Drainage channels for vehicular and pedestrian areas".

EN1253				EN1433			
Icon	Load classes	Load	Application	Icon	Load classes	Load	Application
H1.5 	H1.5	1.5kN	No load areas				
K3 	K3	3kN	Barefoot areas				
L15 	L15	15kN	Pedestrian and light traffic	A15 	A15	15kN	Pedestrian and light traffic
R50 	R50	50kN	Light traffic and light industrial areas				
M125 	M125	125kN	Traffic and industrial areas	B125 	B125	125kN	Car parking areas
N250 	N250	250kN	Heavy traffic and heavy industrial areas	C250 	C250	250kN	Along roads, slow traffic lane
P400 	P400	400kN	Extra heavy traffic and industrial areas	D400 	D400	400kN	Main driving road, fast traffic lane
				E600 	E600	600kN	Container and industrial areas
				F900 	F900	900kN	Airports

## MEA Modular Box Channel

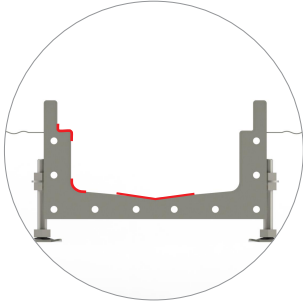
CE Certification



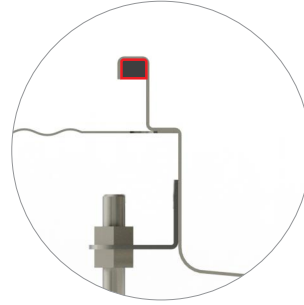
- |                  |               |
|------------------|---------------|
| 1. Level Channel | 6. Drains     |
| 2. Branch Unit   | 7. Filter     |
| 3. Corner Unit   | 8. Water Trap |
| 4. Center Outlet | 9. End Plate  |
| 5. End Outlet    | 10. Grating   |



## Product Characteristics



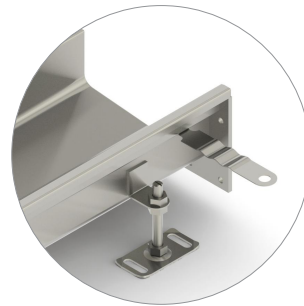
- > Internal radii  $\geq 3\text{mm}$ , bottom radii  $\geq 10\text{mm}$
- > V shape bottom, increases cleaning effectiveness
- > No welded joints



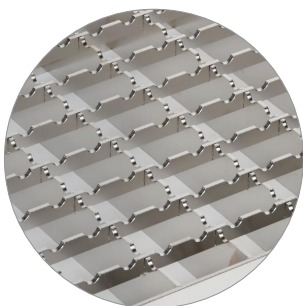
- > Edge in-fill, ensures stable and impact resistance
- > Prevent harbouring microorganism



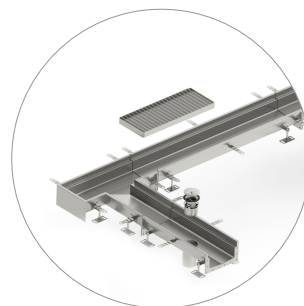
- > Wide variety of outlet units
- > With filter and water trap



- > Adjustable legs
- > Anchor plates ensure firm installation

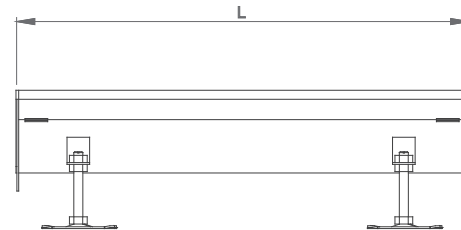
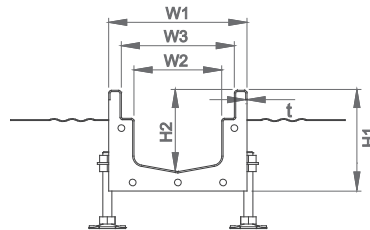
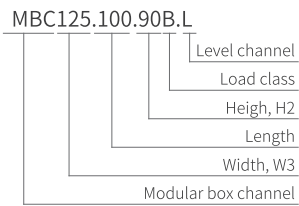


- > Slip resistant gratings
- > Optional pickling passivation, electropolishing, sandblasting surface treatment, durability and long life



- > Modular assembly for quick installation
- > With anti-deformation accessories for transport and installation
- > Provide customized services

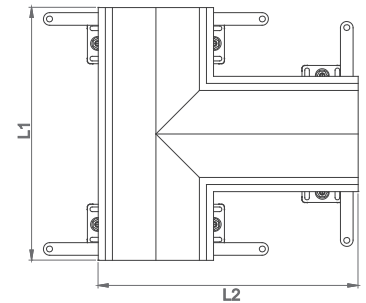
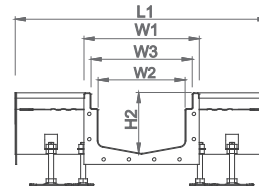
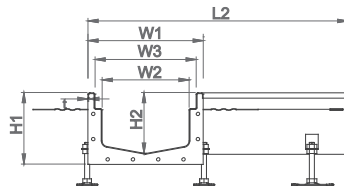
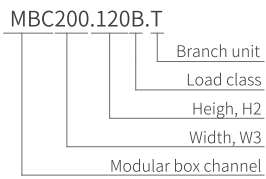
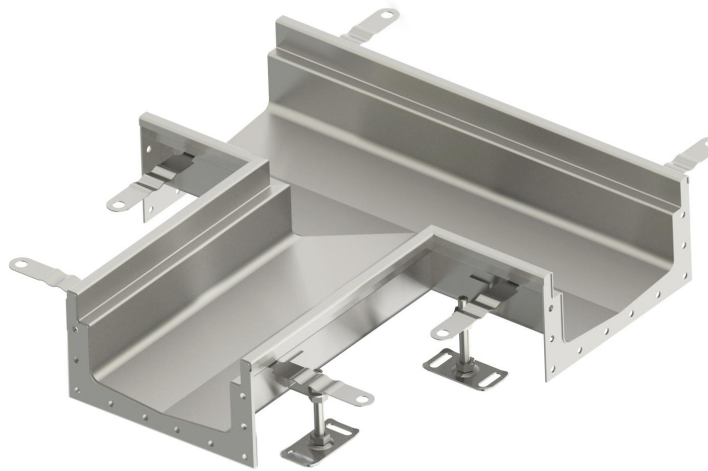
Level Channel



Model	L	H2	H1	W1	W2	W3	t	Material
	mm	mm	mm	mm	mm	mm	mm	
MBC125.100.60B.L	1000	60	81.5	153	97	125	1.5	304/316L
MBC125.100.60C.L	1000	60	82	155			2	304/316L
MBC125.100.110B.L	1000	110	131.5	153			1.5	304/316L
MBC125.100.110C.L	1000	110	132	155			2	304/316L
MBC200.100.60B.L	1000	60	81.5	228	172	200	1.5	304/316L
MBC200.100.60C.L	1000	60	82	230			2	304/316L
MBC200.100.250B.L	1000	250	271.5	228			1.5	304/316L
MBC200.100.250C.L	1000	250	272	230			2	304/316L
MBC250.100.70B.L	1000	70	91.5	278	222	250	1.5	304/316L
MBC250.100.70C.L	1000	70	92	280			2	304/316L
MBC250.100.350B.L	1000	350	371.5	278			1.5	304/316L
MBC250.100.350C.L	1000	350	372	280			2	304/316L
MBC300.100.70B.L	1000	70	91.5	328	272	300	1.5	304/316L
MBC300.100.70C.L	1000	70	92	330			2	304/316L
MBC300.100.450B.L	1000	450	471.5	328			1.5	304/316L
MBC300.100.450C.L	1000	450	472	330			2	304/316L

Remark: 1.  $L \leq 2000$ , excess size needs to be customized  
 2. The upper and lower limits of H2 are shown in the table, excess size needs to be customized

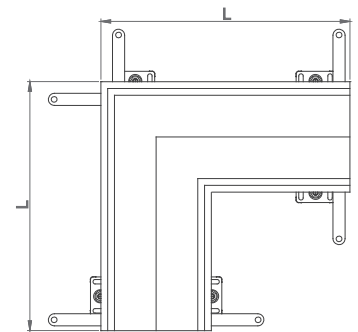
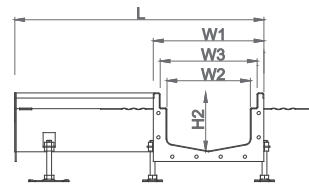
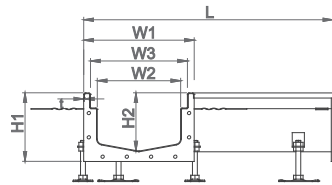
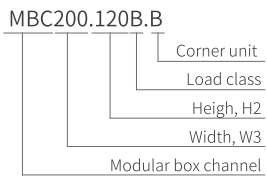
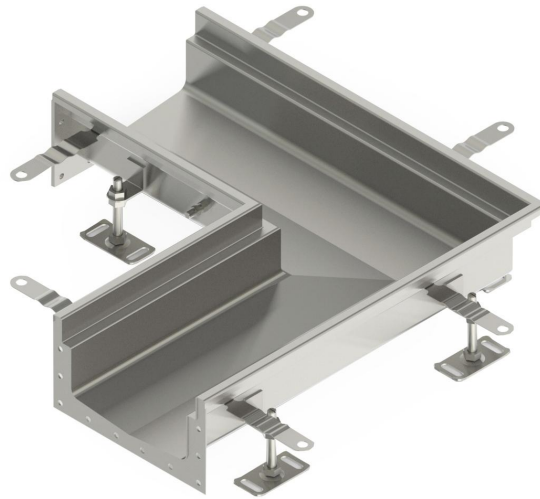
Branch Unit



Model	L1	L2	H2	H1	W1	W2	W3	t	Material
	mm	mm	mm	mm	mm	mm	mm	mm	
MBC125.60B.T	500	514	60	81.5	153	97	125	1.5	304/316L
MBC125.60C.T	500	515	60	82	155			2	304/316L
MBC125.110B.T	500	514	110	131.5	153			1.5	304/316L
MBC125.110C.T	500	515	110	132	155			2	304/316L
MBC200.60B.T	500	514	60	81.5	228	172	200	1.5	304/316L
MBC200.60C.T	500	515	60	82	230			2	304/316L
MBC200.250B.T	500	514	250	271.5	228			1.5	304/316L
MBC200.250C.T	500	515	250	272	230			2	304/316L
MBC250.70B.T	500	514	70	91.5	278	222	250	1.5	304/316L
MBC250.70C.T	500	515	70	92	280			2	304/316L
MBC250.350B.T	500	514	350	371.5	278			1.5	304/316L
MBC250.350C.T	500	515	350	372	280			2	304/316L
MBC300.70B.T	500	514	70	91.5	328	272	300	1.5	304/316L
MBC300.70C.T	500	515	70	92	330			2	304/316L
MBC300.450B.T	500	514	450	471.5	328			1.5	304/316L
MBC300.450C.T	500	515	450	472	330			2	304/316L

Remark: 1. The upper and lower limits of H2 are shown in the table, excess size needs to be customized

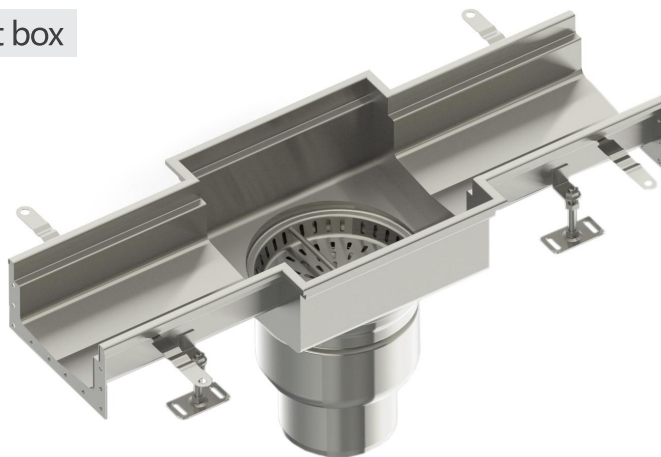
Corner Unit



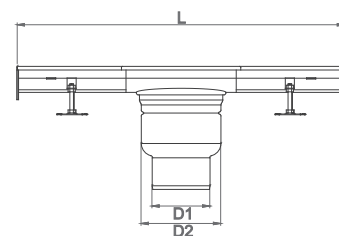
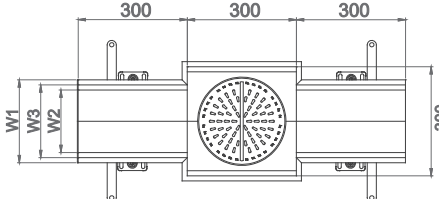
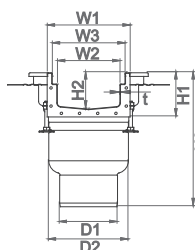
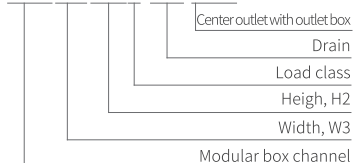
Model	L	H2	H1	W1	W2	W3	t	Material
	mm	mm	mm	mm	mm	mm	mm	
MBC125.60B.B	514	60	81.5	153	97	125	1.5	304/316L
MBC125.60C.B	515	60	82	155			2	304/316L
MBC125.110B.B	514	110	131.5	153			1.5	304/316L
MBC125.110C.B	515	110	132	155			2	304/316L
MBC200.60B.B	514	60	81.5	228	172	200	1.5	304/316L
MBC200.60C.B	515	60	82	230			2	304/316L
MBC200.250B.B	514	250	271.5	228			1.5	304/316L
MBC200.250C.B	515	250	272	230			2	304/316L
MBC250.70B.B	514	70	91.5	278	222	250	1.5	304/316L
MBC250.70C.B	515	70	92	280			2	304/316L
MBC250.350B.B	514	350	371.5	278			1.5	304/316L
MBC250.350C.B	515	350	372	280			2	304/316L
MBC300.70B.B	514	70	91.5	328	272	300	1.5	304/316L
MBC300.70C.B	515	70	92	330			2	304/316L
MBC300.450B.B	514	450	471.5	328			1.5	304/316L
MBC300.450C.B	515	450	472	330			2	304/316L

Remark: 1. The upper and lower limits of H2 are shown in the table, excess size needs to be customized

Center Outlet with outlet box



MBC200.100B.219.COB



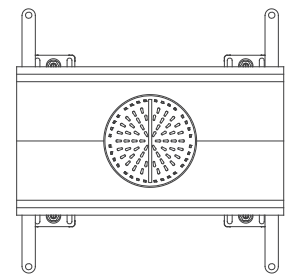
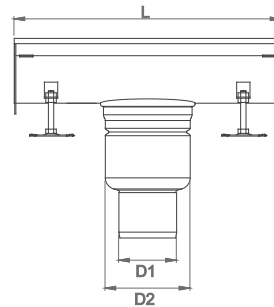
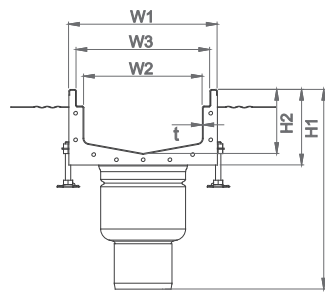
Model	L	H1	H2	H3	W1	W2	W3	D1	D2	t	Water trap	Filter	Material										
	mm	mm	mm	mm	mm	mm	mm	mm	mm	mm													
MBC125.60B.159.COB	900	81.5	60	324	153	97	125	108/76	159	1.5	WT157	B167	304/316L										
MBC125.60C.159.COB		82	60	324.5	155			108/76		2			304/316L										
MBC125.70B.159.COB		91.5	70	324	153			108/76		1.5			304/316L										
MBC125.70C.159.COB		92	70	324.5	155			108/76		2			304/316L										
MBC125.110B.159.CO		131.5	110	364	153			108/76		1.5			304/316L										
MBC125.110C.159.CO		132	110	364.5	155			108/76		2			304/316L										
MBC125.60B.219.COB		81.5	60	338.5	153			159/108		219			200	159	1.5	WT217	B237	304/316L					
MBC125.60C.219.COB		82	60	339	155			159/108							2			304/316L					
MBC125.70B.219.COB		91.5	70	338.5	153			159/108							1.5			304/316L					
MBC125.70C.219.COB		92	70	339	155			159/108							2			304/316L					
MBC125.110B.219.CO		131.5	110	378.5	153			159/108							1.5			304/316L					
MBC125.110C.219.CO		132	110	379	155			159/108							2			304/316L					
MBC200.60B.159.COB	900	81.5	60	324	228	172	200	108/76	159		1.5	WT157			B167			304/316L					
MBC200.60C.159.COB		82	60	324.5	230			108/76			2							304/316L					
MBC200.70B.159.COB		91.5	70	324	228			108/76			1.5							304/316L					
MBC200.70C.159.COB		92	70	324.5	230			108/76			2							304/316L					
MBC200.250B.159.CO		271.5	250	504	228			108/76			1.5							304/316L					
MBC200.250C.159.CO		272	250	504.5	230			108/76			2							304/316L					
MBC200.60B.219.COB		81.5	60	338.5	228			159/108		219	250		159	1.5		WT217	B237	304/316L					
MBC200.60C.219.COB		82	60	339	230			159/108						2				304/316L					
MBC200.70B.219.COB		91.5	70	338.5	228			159/108						1.5				304/316L					
MBC200.70C.219.COB		92	70	339	230			159/108						2				304/316L					
MBC200.250B.219.CO		271.5	250	518.5	228			159/108						1.5				304/316L					
MBC200.250C.219.CO		272	250	519	230			159/108						2				304/316L					
MBC250.70B.159.COB	900	91.5	70	324	278	222	250	108/76	159			1.5		WT157	B167			304/316L					
MBC250.70C.159.COB		92	70	324.5	280			108/76				2						304/316L					
MBC250.350B.159.CO		371.5	350	604	278			108/76				1.5						304/316L					
MBC250.350C.159.CO		372	350	604.5	280			108/76				2						304/316L					
MBC250.70B.219.COB		91.5	70	338.5	278			159/108				219						250	159	1.5	WT217	B237	304/316L
MBC250.70C.219.COB		92	70	339	280			159/108												2			304/316L
MBC250.350B.219.CO		371.5	350	618.5	278			159/108		1.5	304/316L												
MBC250.350C.219.CO		372	350	619	280			159/108		2	304/316L												

Remark: 1. The upper and lower limits of H2 are shown in the table, excess size needs to be customized

Center Outlet



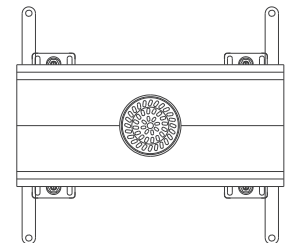
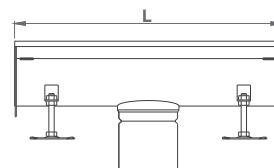
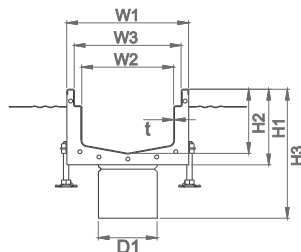
MBC250.120B.159.CO  
 Center outlet  
 Drain  
 Load class  
 Heigh, H2  
 Width, W3  
 Modular box channel



Model	L	H1	H2	H3	W1	W2	W3	D1	D2	t	Water trap	Filter	Material
	mm	mm	mm	mm	mm	mm	mm	mm	mm	mm			
MBC250.70B.159.CO	500	91.5	70	324	278	222	250	108/76	159	1.5	WT157	B167	304/316L
MBC250.70C.159.CO		92	70	324.5	280			108/76		2			
MBC250.350B.159.CO		371.5	350	604	278			108/76		1.5			
MBC250.350C.159.CO		372	350	604.5	280			108/76		2			
MBC300.70B.159.CO	500	91.5	70	324	328	272	300	108/76	159	1.5	WT157	B167	304/316L
MBC300.70C.159.CO		92	70	324.5	330			108/76		2			
MBC300.450B.159.CO		471.5	450	704	328			108/76		1.5			
MBC300.450C.159.CO		472	450	704.5	330			108/76		2			
MBC300.70B.219.CO	500	91.5	70	338.5	328	272	300	159/108	219	1.5	WT217	B237	304/316L
MBC300.70C.219.CO		92	70	339	330			159/108		2			
MBC300.450B.219.CO		471.5	450	718.5	328			159/108		1.5			
MBC300.450C.219.CO		472	450	719	330			159/108		2			

Remark: 1. The upper and lower limits of H2 are shown in the table, excess size needs to be customized

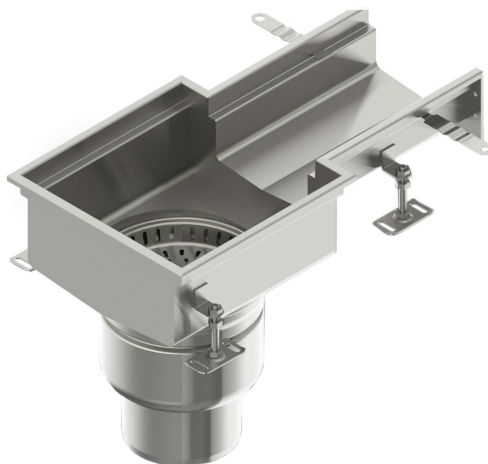
MBC200.120B.CO  
 Center outlet  
 Load class  
 Heigh, H2  
 Width, W3  
 Modular box channel



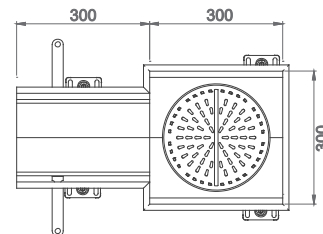
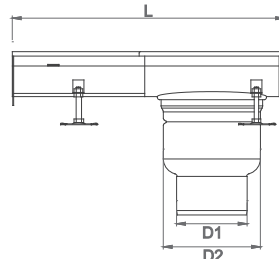
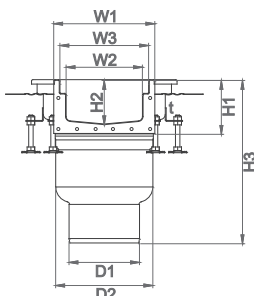
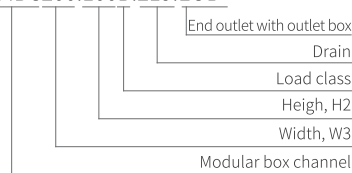
Model	L	H1	H2	H3	W1	W2	W3	D1	t	Water trap	Filter	Material
	mm	mm	mm	mm	mm	mm	mm	mm	mm			
MBC200.60B.CO	500	81.5	60	181.5	228	172	200	110	1.5	WT108	B110	304/316L
MBC200.60C.CO		82	60	182	230			110	2			
MBC200.250B.CO		271.5	250	371.5	228			110	1.5			
MBC200.250C.CO		272	250	372	230			110	2			

Remark: 1. The upper and lower limits of H2 are shown in the table, excess size needs to be customized

End Outlet with outlet box



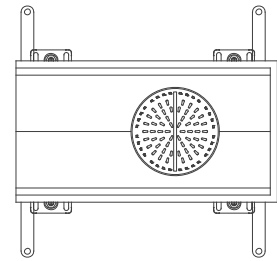
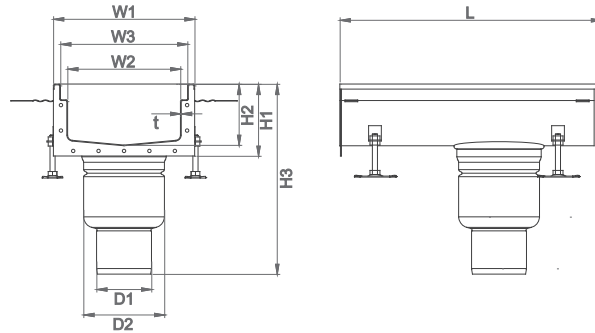
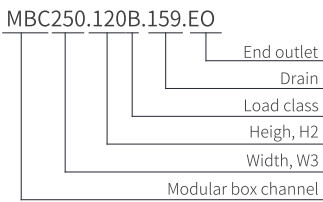
MBC200.100B.219.EOB



Model	L	H1	H2	H3	W1	W2	W3	D1	D2	t	Water trap	Filter	Material				
	mm	mm	mm	mm	mm	mm	mm	mm	mm	mm							
MBC125.60B.159.EOB	614	81.5	60	324	153	97	125	108/76	159	1.5	WT157	B167	304/316L				
MBC125.60C.159.EOB		82	60	324.5	155			108/76		2			304/316L				
MBC125.70B.159.EOB		91.5	70	324	153			108/76		1.5			304/316L				
MBC125.70C.159.EOB		92	70	324.5	155			108/76		2			304/316L				
MBC125.110B.159.EOB		131.5	110	364	153			108/76		1.5			304/316L				
MBC125.110C.159.EOB		132	110	364.5	155			108/76		2			304/316L				
MBC125.60B.219.EOB		81.5	60	338.5	153			159/108	219	159/108	159/108	219	1.5	WT217	B237	304/316L	
MBC125.60C.219.EOB		82	60	339	155			159/108								2	304/316L
MBC125.70B.219.EOB		91.5	70	338.5	153			159/108								1.5	304/316L
MBC125.70C.219.EOB		92	70	339	155			159/108								2	304/316L
MBC125.110B.219.EOB		131.5	110	378.5	153			159/108								1.5	304/316L
MBC125.110C.219.EOB		132	110	379	155			159/108								2	304/316L
MBC200.60B.159.EOB	614	81.5	60	324	228	172	200	108/76	159	1.5	WT157	B167	304/316L				
MBC200.60C.159.EOB		82	60	324.5	230			108/76					2	304/316L			
MBC200.70B.159.EOB		91.5	70	324	228			108/76					1.5	304/316L			
MBC200.70C.159.EOB		92	70	324.5	230			108/76					2	304/316L			
MBC200.250B.159.EOB		271.5	250	504	228			108/76					1.5	304/316L			
MBC200.250C.159.EOB		272	250	504.5	230			108/76					2	304/316L			
MBC200.60B.219.EOB		81.5	60	338.5	228			159/108	219	159/108	159/108	219	1.5	WT217	B237	304/316L	
MBC200.60C.219.EOB		82	60	339	230			159/108								2	304/316L
MBC200.70B.219.EOB		91.5	70	338.5	228			159/108								1.5	304/316L
MBC200.70C.219.EOB		92	70	339	230			159/108								2	304/316L
MBC200.250B.219.EOB		271.5	250	518.5	228			159/108								1.5	304/316L
MBC200.250C.219.EOB		272	250	519	230			159/108								2	304/316L
MBC250.70B.159.EOB	614	91.5	70	324	278	222	250	108/76	159	1.5	WT157	B167	304/316L				
MBC250.70C.159.EOB		92	70	324.5	280			108/76					2	304/316L			
MBC250.350B.159.EOB		371.5	350	604	278			108/76					1.5	304/316L			
MBC250.350C.159.EOB		372	350	604.5	280			108/76					2	304/316L			
MBC250.70B.219.EOB		91.5	70	338.5	278			159/108	219	159/108	159/108	219	1.5	WT217	B237	304/316L	
MBC250.70C.219.EOB		92	70	339	280			159/108								2	304/316L
MBC250.350B.219.EOB		371.5	350	618.5	278			159/108								1.5	304/316L
MBC250.350C.219.EOB		372	350	619	280			159/108								2	304/316L

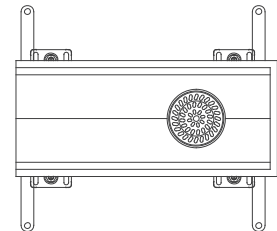
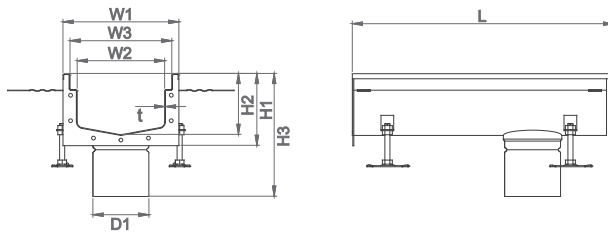
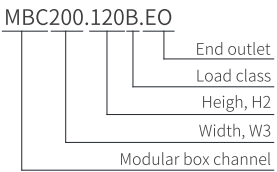
Remark: 1. The upper and lower limits of H2 are shown in the table, excess size needs to be customized

End Outlet



Model	L	H1	H2	H3	W1	W2	W3	D1	D2	t	Water trap	Filter	Material
	mm	mm	mm	mm	mm	mm	mm	mm	mm	mm			
MBC250.70B.159.EO	514	91.5	70	324	278	222	250	108/76	159	1.5	WT157	B167	304/316L
MBC250.70C.159.EO		92	70	324.5	280			108/76		2			
MBC250.350B.159.EO		371.5	350	604	278			108/76		1.5			
MBC250.350C.159.EO		372	350	604.5	280			108/76		2			
MBC300.70B.159.EO	514	91.5	70	324	328	272	300	108/76	159	1.5	WT157	B167	304/316L
MBC300.70C.159.EO		92	70	324.5	330			108/76		2			
MBC300.450B.159.EO		471.5	450	704	328			108/76		1.5			
MBC300.450C.159.EO		472	450	704.5	330			108/76		2			
MBC300.70B.219.EO		91.5	70	338.5	328			159/108		1.5			
MBC300.70C.219.EO		92	70	339	330			159/108		2			
MBC300.450B.219.EO		471.5	450	718.5	328			159/108	1.5				
MBC300.450C.219.EO		472	450	719	330			159/108	2				

Remark: 1. The upper and lower limits of H2 are shown in the table, excess size needs to be customized



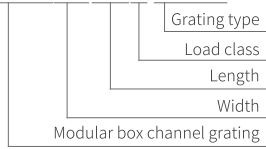
Model	L	H1	H2	H3	W1	W2	W3	D1	t	Water trap	Filter	Material
	mm	mm	mm	mm	mm	mm	mm	mm	mm			
MBC200.60B.EO	514	81.5	60	181.5	228	172	200	110	1.5	WT108	B110	304/316L
MBC200.60C.EO		82	60	182	230			110	2			
MBC200.250B.EO		271.5	250	371.5	228			110	1.5			
MBC200.250C.EO		272	250	372	230			110	2			

Remark: 1. The upper and lower limits of H2 are shown in the table, excess size needs to be customized

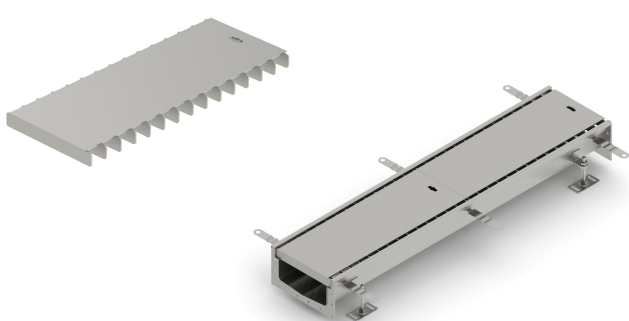
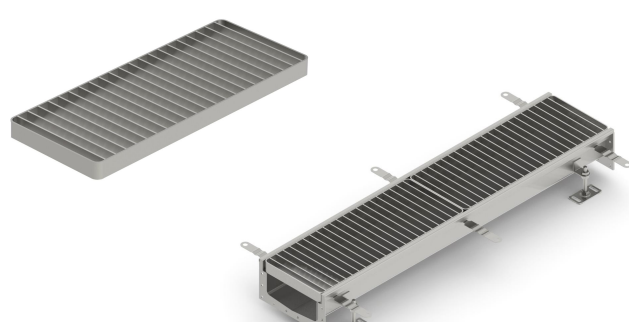


Gratings

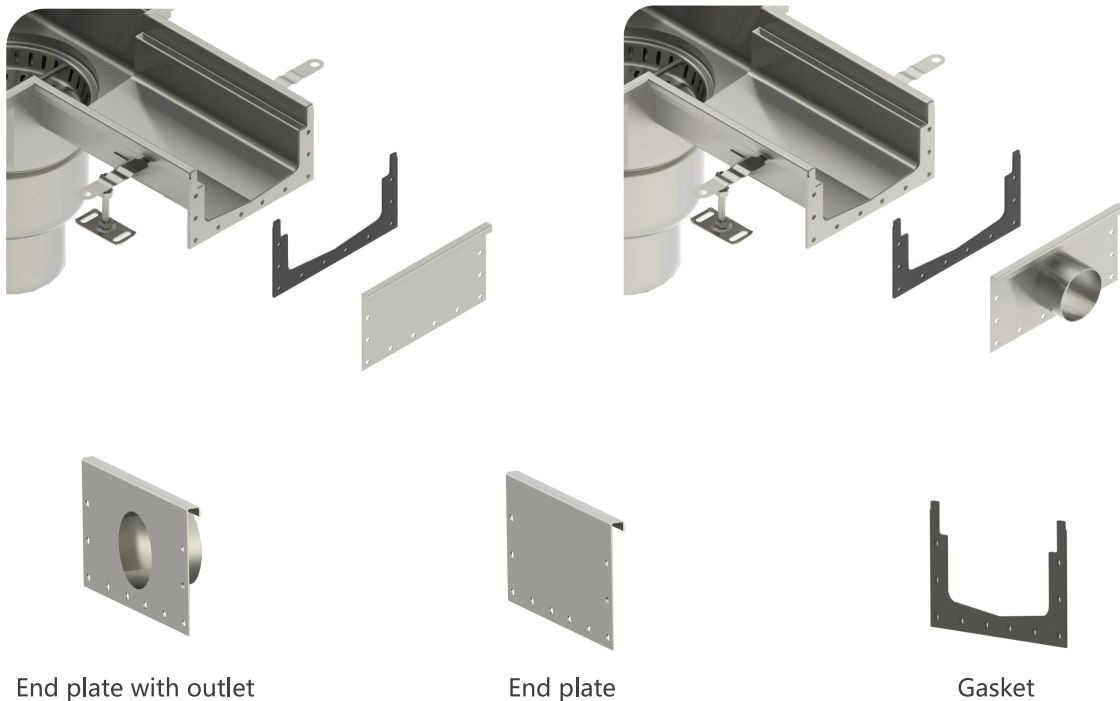
MBC-G125.375L(Ladder)



Model	Product (Installation effect)	Load class EN1253	Width	Length	Material
<b>Ladder grating</b>					
MBC-G125.375L(Ladder)		≤N250	125	375	304/316L
MBC-G125.500L(Ladder)		≤N250	125	500	304/316L
MBC-G125.1000L(Ladder)		≤N250	125	1000	304/316L
MBC-G200.300L(Ladder)		≤N250	200	300	304/316L
MBC-G200.500L(Ladder)		≤N250	200	500	304/316L
MBC-G200.1000L(Ladder)		≤N250	200	1000	304/316L
MBC-G250.250L(Ladder)		≤M125	250	250	304/316L
MBC-G250.500L(Ladder)		≤M125	250	500	304/316L
MBC-G250.1000L(Ladder)		≤M125	250	1000	304/316L
MBC-G300.200L(Ladder)		≤M125	300	200	304/316L
MBC-G300.500L(Ladder)		≤M125	300	500	304/316L
MBC-G300.1000L(Ladder)		≤M125	300	1000	304/316L
<b>Mesh grating</b>					
MBC-G125.375L(Mesh)		≤M125	125	375	304/316L
MBC-G125.500L(Mesh)		≤M125	125	500	304/316L
MBC-G125.1000L(Mesh)		≤M125	125	1000	304/316L
MBC-G200.300L(Mesh)		≤M125	200	300	304/316L
MBC-G200.500L(Mesh)		≤M125	200	500	304/316L
MBC-G200.1000L(Mesh)		≤M125	200	1000	304/316L
MBC-G250.250L(Mesh)		≤L15	250	250	304/316L
MBC-G250.500L(Mesh)		≤L15	250	500	304/316L
MBC-G250.1000L(Mesh)		≤L15	250	1000	304/316L
MBC-G300.200L(Mesh)		≤L15	300	200	304/316L
MBC-G300.500L(Mesh)		≤L15	300	500	304/316L
MBC-G300.1000L(Mesh)		≤L15	300	1000	304/316L
<b>Wedge mesh grating</b>					
MBC-G125.375L(Wedge)		≤N250	125	375	304/316L
MBC-G125.500L(Wedge)		≤N250	125	500	304/316L
MBC-G125.1000L(Wedge)		≤N250	125	1000	304/316L
MBC-G200.300L(Wedge)		≤N250	200	300	304/316L
MBC-G200.500L(Wedge)		≤N250	200	500	304/316L
MBC-G200.1000L(Wedge)		≤N250	200	1000	304/316L
MBC-G250.250L(Wedge)		≤M125	250	250	304/316L
MBC-G250.500L(Wedge)		≤M125	250	500	304/316L
MBC-G250.1000L(Wedge)		≤M125	250	1000	304/316L
MBC-G300.200L(Wedge)		≤M125	300	200	304/316L
MBC-G300.500L(Wedge)		≤M125	300	500	304/316L
MBC-G300.1000L(Wedge)		≤M125	300	1000	304/316L

Model	Product (Installation effect)	Load class EN1253	Width	Length	Material	
<b>Slot grating</b>						
MBC-G125.375L(Slot)		≤N250	125	375	304/316L	
MBC-G125.500L(Slot)		≤N250	125	500	304/316L	
MBC-G125.1000L(Slot)		≤N250	125	1000	304/316L	
MBC-G200.300L(Slot)		≤N250	200	300	304/316L	
MBC-G200.500L(Slot)		≤N250	200	500	304/316L	
MBC-G200.1000L(Slot)		≤N250	200	1000	304/316L	
MBC-G250.250L(Slot)		≤M125	250	250	304/316L	
MBC-G250.500L(Slot)		≤M125	250	500	304/316L	
MBC-G250.1000L(Slot)		≤M125	250	1000	304/316L	
MBC-G300.200L(Slot)		≤M125	300	200	304/316L	
MBC-G300.500L(Slot)		≤M125	300	500	304/316L	
MBC-G300.1000L(Slot)		≤M125	300	1000	304/316L	
<b>Hygienic ladder grating</b>						
MBC-G125.375L(H-ladder)			≤N250	125	375	304/316L
MBC-G125.500L(H-ladder)	≤N250		125	500	304/316L	
MBC-G125.1000L(H-ladder)	≤N250		125	1000	304/316L	
MBC-G200.300L(H-ladder)	≤N250		200	300	304/316L	
MBC-G200.500L(H-ladder)	≤N250		200	500	304/316L	
MBC-G200.1000L(H-ladder)	≤N250		200	1000	304/316L	
MBC-G250.250L(H-ladder)	≤M125		250	250	304/316L	
MBC-G250.500L(H-ladder)	≤M125		250	500	304/316L	
MBC-G250.1000L(H-ladder)	≤M125		250	1000	304/316L	
MBC-G300.200L(H-ladder)	≤M125		300	200	304/316L	
MBC-G300.500L(H-ladder)	≤M125		300	500	304/316L	
MBC-G300.1000L(H-ladder)	≤M125		300	1000	304/316L	

Accessories



2mm thickness end plate, customized outlet diameter.

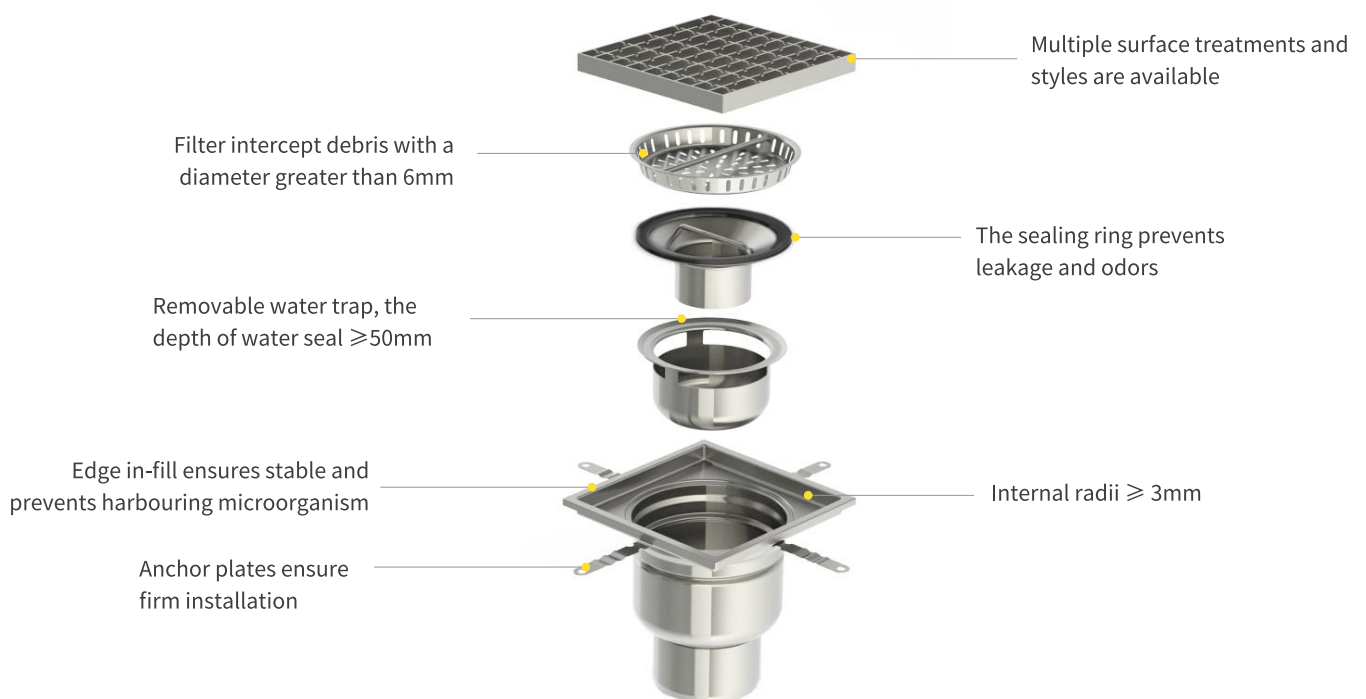
## MEA Drains

 CE Certification

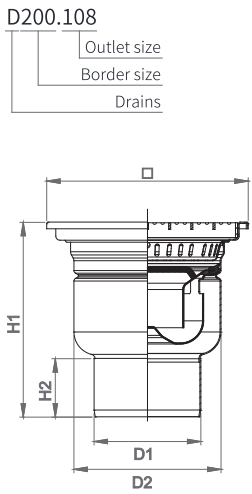


### Product Characteristics

- > Stainless steel 304 or 316L
- > Slip resistant gratings
- > With filter and removable water trap
- > The depth of water seal  $\geq 50\text{mm}$
- > Smooth surface, easy to clean and disinfect
- > Quick installation

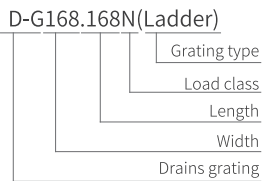


Technical Parameter



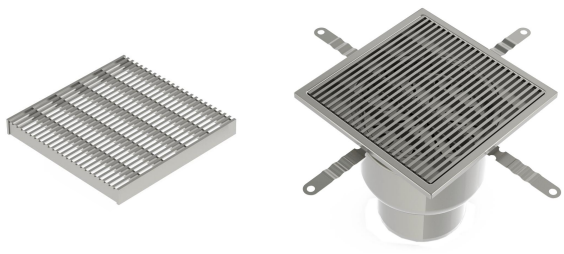
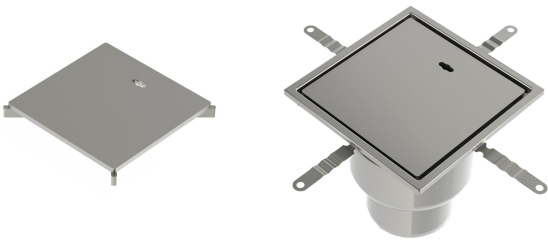
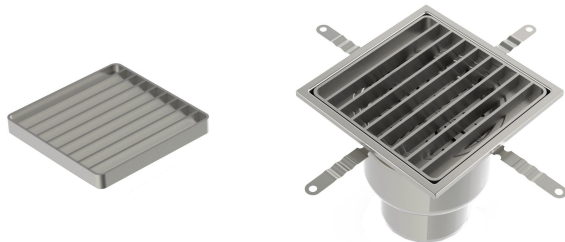
Model	Size □mm	D1	D2	H1	H2	Water seal depth mm	Material	Water trap	Filter	Grating size mm	
		Φmm	Φmm	mm	mm						
D200.76	200X200	76	159	275	80	50	304/316L	WT157	B167	168X168	
D200.108		108			85						218X218
D250.76	250X250	76			80					268X268	
D250.108		108			85						
D300.76	300X300	76			80						318X318
D300.108		108			80						
D300.159	159	87	368X368								
D350.108	350X350	108		80							
D350.159		159	87								
D400.108	400X400	108	80								
D400.159		159	87								

Gratings



Model	Product (Installation effect)	Load class EN1253	Width	Length	Material
<b>Ladder grating</b>					
D-G168.168N(Ladder)		≤N250	168	168	304/316L
D-G218.218N(Ladder)		≤N250	218	218	304/316L
D-G268.268N(Ladder)		≤N250	268	268	304/316L
D-G318.318N(Ladder)		≤N250	318	318	304/316L
D-G368.368N(Ladder)		≤N250	368	368	304/316L
<b>Mesh grating</b>					
D-G168.168N(Mesh)		≤N250	168	168	304/316L
D-G218.218N(Mesh)		≤N250	218	218	304/316L
D-G268.268N(Mesh)		≤N250	268	268	304/316L
D-G318.318N(Mesh)		≤N250	318	318	304/316L
D-G368.368N(Mesh)		≤N250	368	368	304/316L

MEA Hygienic Drainage System

Model	Product (Installation effect)	Load class EN1253	Width	Length	Material
<b>Wedge mesh grating</b>					
D-G168.168N(Wedge)		≤N250	168	168	304/316L
D-G218.218N(Wedge)		≤N250	218	218	304/316L
D-G268.268N(Wedge)		≤N250	268	268	304/316L
D-G318.318N(Wedge)		≤N250	318	318	304/316L
D-G368.368N(Wedge)		≤N250	368	368	304/316L
<b>Slot grating</b>					
D-G168.168N(Slot)		≤N250	168	168	304/316L
D-G218.218N(Slot)		≤N250	218	218	304/316L
D-G268.268N(Slot)		≤N250	268	268	304/316L
D-G318.318N(Slot)		≤N250	318	318	304/316L
D-G368.368N(Slot)		≤N250	368	368	304/316L
<b>Hygienic ladder grating</b>					
D-G168.168N(H-ladder)		≤N250	168	168	304/316L
D-G218.218N(H-ladder)		≤N250	218	218	304/316L
D-G268.268N(H-ladder)		≤N250	268	268	304/316L
D-G318.318N(H-ladder)		≤N250	318	318	304/316L
D-G368.368N(H-ladder)		≤N250	368	368	304/316L

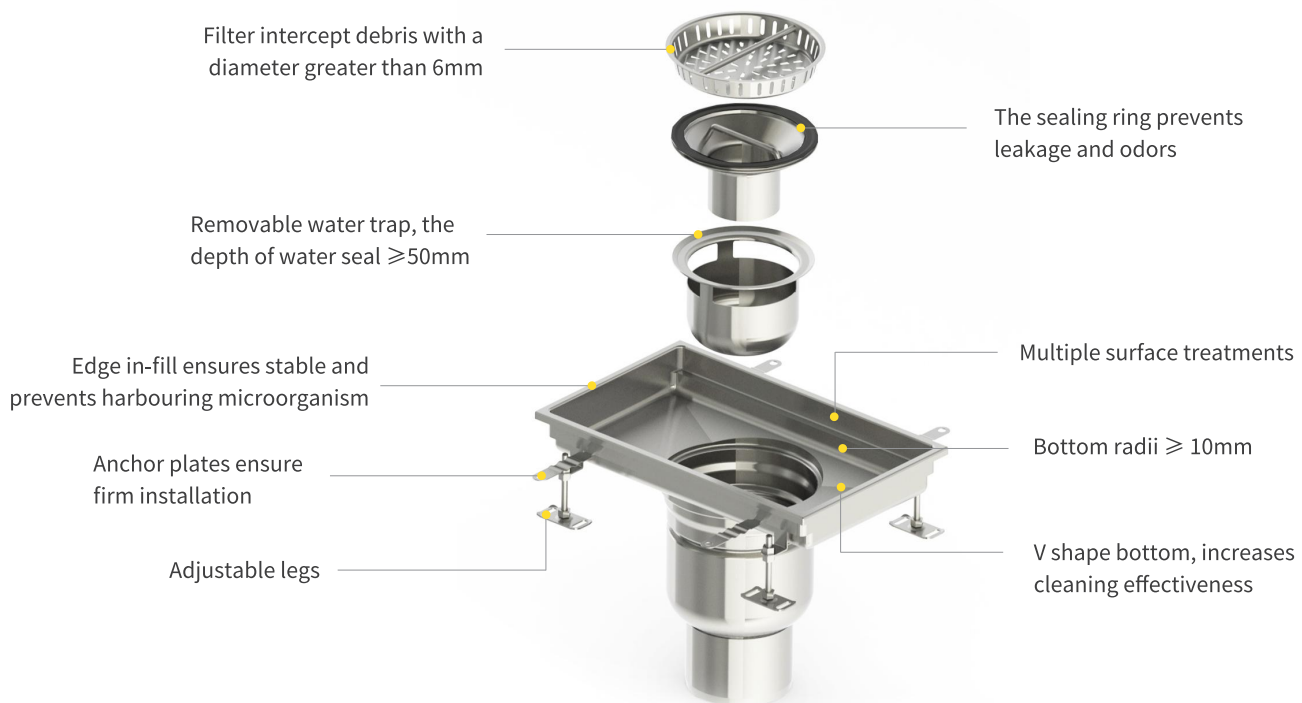
# MEA Box Channel

 CE Certification



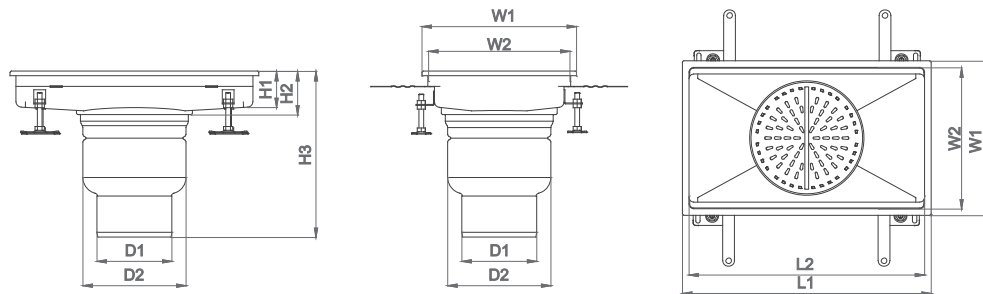
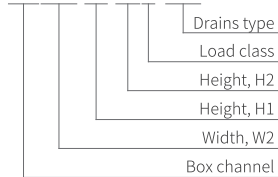
## Product Characteristics

- > Stainless steel 304 or 316L
- > Slip resistant gratings
- > Internal radii  $\geq 3\text{mm}$ , bottom radii  $\geq 10\text{mm}$
- > V shape bottom, increases cleaning effectiveness
- > Edge in-fill, ensures stable
- > Wide variety of outlet units, with filter and water trap
- > Smooth surface, easy to clean and disinfect
- > Customizable size



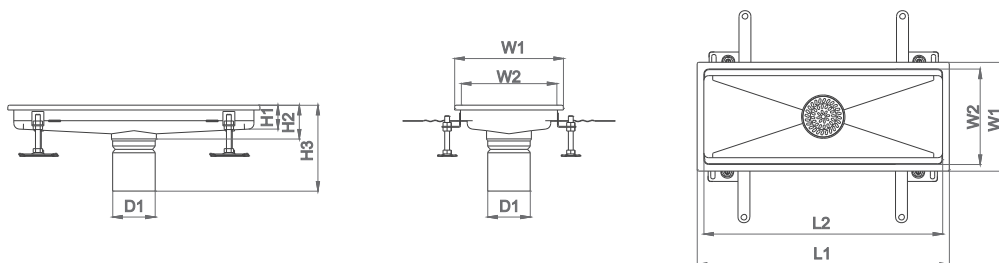
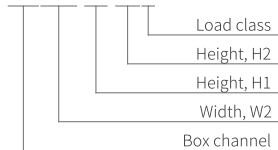
## Technical Parameter

BC300.50.60B.219



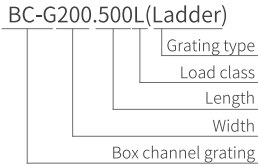
Model	L1	L2	H1	H2	H3	W1	W2	D1	D2	t	Water trap	Filter	Material
	mm	mm	mm	mm	mm	mm	mm	mm	mm	mm			
BC250.50.60B.159	528	500	50	60	305.5	278	250	108/76		1.5	WT157	B167	304/316L
BC250.50.60B.159	1028	1000	50	60	305.5	278	250	108/76	159	1.5			304/316L
BC250.50.60C.159	530	500	50	60	305.5	280	250	108/76	2	2			304/316L
BC250.50.60C.159	1030	1000	50	60	305.5	280	250	108/76	2	2			304/316L
BC300.50.60B.159	528	500	50	60	305.5	328	300	108/76		1.5	WT157	B167	304/316L
BC300.50.60B.159	1028	1000	50	60	305.5	328	300	108/76	159	1.5			304/316L
BC300.50.70B.159	528	500	50	70	315.5	328	300	108/76	1.5	2			304/316L
BC300.50.70B.159	1028	1000	50	70	315.5	328	300	108/76	1.5	2			304/316L
BC300.50.80B.159	528	500	50	80	325.5	328	300	108/76		1.5	WT157	B167	304/316L
BC300.50.80B.159	1028	1000	50	80	325.5	328	300	108/76	159	1.5			304/316L
BC300.50.60C.159	530	500	50	60	305.5	330	300	108/76	2	2			304/316L
BC300.50.60C.159	1030	1000	50	60	305.5	330	300	108/76	2	2			304/316L
BC300.50.70C.159	530	500	50	70	315.5	330	300	108/76		2	WT217	B237	304/316L
BC300.50.70C.159	1030	1000	50	70	315.5	330	300	108/76	219	2			304/316L
BC300.50.80C.159	530	500	50	80	325.5	330	300	108/76	2	2			304/316L
BC300.50.80C.159	1030	1000	50	80	325.5	330	300	108/76	2	2			304/316L
BC300.50.60B.219	528	500	50	60	320	328	300	159/108		1.5	WT217	B237	304/316L
BC300.50.60B.219	1028	1000	50	60	320	328	300	159/108	219	1.5			304/316L
BC300.50.70B.219	528	500	50	70	330	328	300	159/108	1.5	2			304/316L
BC300.50.70B.219	1028	1000	50	70	330	328	300	159/108	1.5	2			304/316L
BC300.50.80B.219	528	500	50	80	340	328	300	159/108		1.5	WT217	B237	304/316L
BC300.50.80B.219	1028	1000	50	80	340	328	300	159/108	219	1.5			304/316L
BC300.50.60C.219	530	500	50	60	320	330	300	159/108	2	2			304/316L
BC300.50.60C.219	1030	1000	50	60	320	330	300	159/108	2	2			304/316L
BC300.50.70C.219	530	500	50	70	330	330	300	159/108		2	WT217	B237	304/316L
BC300.50.70C.219	1030	1000	50	70	330	330	300	159/108	219	2			304/316L
BC300.50.80C.219	530	500	50	80	340	330	300	159/108	2	2			304/316L
BC300.50.80C.219	1030	1000	50	80	340	330	300	159/108	2	2			304/316L

BC200.50.60B



Model	L1	L2	H1	H2	H3	W1	W2	D1	t	Water trap	Filter	Material
	mm	mm	mm	mm	mm	mm	mm	mm	mm			
BC200.50.60B	528	500	50	60	165	228	200	110	1.5	WT108	B110	304/316L
BC200.50.60B	1028	1000	50	60	165	228	200	110	1.5			304/316L
BC200.50.60C	530	500	50	60	165	230	200	110	2			304/316L
BC200.50.60C	1030	1000	50	60	165	230	200	110	2			304/316L

Gratings

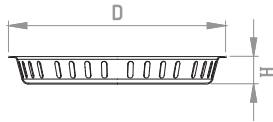


Model	Product (Installation effect)	Load class EN1253	Width	Length	Material
<b>Ladder grating</b>					
BC-G200.500L(Ladder)		≤N250	200	500	304/316L
BC-G200.1000L(Ladder)		≤N250	200	1000	304/316L
BC-G250.500L(Ladder)		≤M125	250	500	304/316L
BC-G250.1000L(Ladder)		≤M125	250	1000	304/316L
BC-G300.500L(Ladder)		≤M125	300	500	304/316L
BC-G300.1000L(Ladder)		≤M125	300	1000	304/316L
<b>Mesh grating</b>					
BC-G200.500L(Mesh)		≤M125	200	500	304/316L
BC-G200.1000L(Mesh)		≤M125	200	1000	304/316L
BC-G250.500L(Mesh)		≤M125	250	500	304/316L
BC-G250.1000L(Mesh)		≤M125	250	1000	304/316L
BC-G300.500L(Mesh)		≤L15	300	500	304/316L
BC-G300.1000L(Mesh)		≤L15	300	1000	304/316L
<b>Wedge mesh grating</b>					
BC-G200.500L(Wedge)		≤N250	200	500	304/316L
BC-G200.1000L(Wedge)		≤N250	200	1000	304/316L
BC-G250.500L(Wedge)		≤M125	250	500	304/316L
BC-G250.1000L(Wedge)		≤M125	250	1000	304/316L
BC-G300.500L(Wedge)		≤M125	300	500	304/316L
BC-G300.1000L(Wedge)		≤M125	300	1000	304/316L
<b>Slot grating</b>					
BC-G200.500L(Slot)		≤N250	200	500	304/316L
BC-G200.1000L(Slot)		≤N250	200	1000	304/316L
BC-G250.500L(Slot)		≤M125	250	500	304/316L
BC-G250.1000L(Slot)		≤M125	250	1000	304/316L
BC-G300.500L(Slot)		≤M125	300	500	304/316L
BC-G300.1000L(Slot)		≤M125	300	1000	304/316L
<b>Hygienic ladder grating</b>					
BC-G200.500L(H-ladder)		≤N250	200	500	304/316L
BC-G200.1000L(H-ladder)		≤N250	200	1000	304/316L
BC-G250.500L(H-ladder)		≤M125	250	500	304/316L
BC-G250.1000L(H-ladder)		≤M125	250	1000	304/316L
BC-G300.500L(H-ladder)		≤M125	300	500	304/316L
BC-G300.1000L(H-ladder)		≤M125	300	1000	304/316L

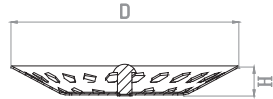


# Accessories

## Filter

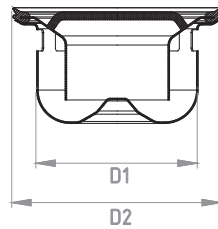


Model	D	H
	mm	mm
B167	167	30
B237	237	30

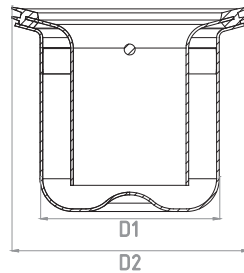


Model	D	H
	mm	mm
B110	110	14

## Water Trap



Model	D1	D2
	mm	mm
WT157	119	157
WT217	167	217



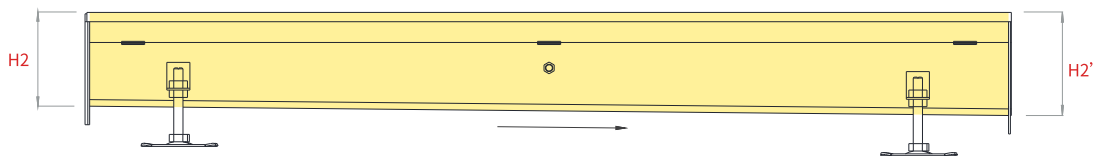
Model	D1	D2
	mm	mm
WT108	82	108

## MEA Customized Services

MEA Hygiene drainage system can provide professional customized services according to project requirements.

### Customizable longitudinal drainage slope

MEA modular drainage system can be customized with longitudinal drainage slope according to the project to improve drainage efficiency.



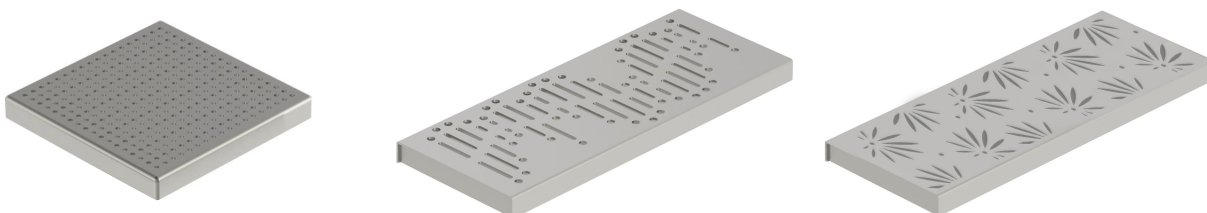
### Customizable slot products

MEA Hygiene drainage system customizable slot products.

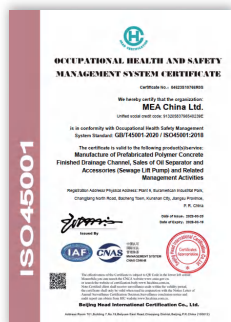
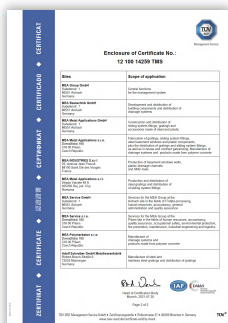


### Customizable patterned grating

MEA Hygiene drainage system customizable patterned grating.



# Certification And Test Report





Official Website



Official Wechat

SUCCESS IN BUILDING, BUILDING SUCCESS



ME A CHINA LTD. / Hotline: 400-900-8996  
[www.meachina.com](http://www.meachina.com)